



The Windsor

WINDWOOD OAKS AT LAKE GROVE

WINDSOR FEATURES

- MASONITE FIBERGLASS FRONT ENTRY DOOR WITH TWO 12" SIDELIGHTS
- FOUR INCH WIDE #1 OAK FLOORS ON FIRST FLOOR INCLUDING KITCHEN AND UPPER HALLWAY
- OAK STEPS WITH PAINTED RISERS ON MAIN STAIRS WITH CUSTOM OAK HANDRAILS
- CERAMIC TILE BATHS AND GARAGE FOYER
- NINE FOOT CEILINGS ON FIRST FLOOR
- EIGHT FOOT CEILINGS IN BASEMENT AND SECOND FLOOR
- FORMAL DINING ROOM
- CENTRAL VACUUM SYSTEM
- SECURITY SYSTEM
- GAS FIREPLACE WITH MANTEL AND MARBLE SURROUNDS
- PLUSH WALL TO WALL CARPETING IN UPSTAIRS BEDROOMS
- MASTER BEDROOM WITH TRAY CEILING AND BEDROOMS 2 & 3 WITH CATHEDRAL CEILING
- INSULATION TO ENERGY CODE
- PEX PIPING WATER LINES
- 14.5 TO 16 S.E.E.R. RHEEM 3 ZONE AIR CONDITIONING 3 ZONE AIR HOT WATER COIL HEATING WITH AN INDIRECT HOT WATER HEATER
- ABUNDANT CLOSETS WITH STANDARD CLOSET MAID WIRE ROD AND SHELF
- CUSTOM QUALITY INTERIOR MOLDING AND TRIM
- MASONITE COLONIAL INTERIOR DOORS WITH LEVER HARDWARE
- TWO COATS OFF WHITE PAINT
- TWO CAR GARAGE WITH INSULATED STEEL DOORS, AUTOMATIC GARAGE DOOR OPENERS, TWO REMOTES, KEYPAD AND CONVENIENT INTERIOR ACCESS

CUSTOM KITCHEN

- RAISED PANEL MAPLE DOORS WITH 42" WALL CABINETS
- GRANITE COUNTERTOPS
- CERAMIC TILE BACKSPLASH
- STAINLESS STEEL SINK WITH KOHLER PULLOUT FAUCET AND SOAP DISPENSER

FRIGIDAIRE STAINLESS STEEL APPLIANCES

- 26 CU. FT. SIDE BY SIDE FROST-FREE REFRIGERATOR/FREEZER WITH ICE AND WATER
- GAS RANGE WITH CANOPY WALL MOUNTED RANGE HOOD VENTED TO THE OUTSIDE
- ELECTRIC WALL OVEN AND MICROWAVE COMBO
- DISHWASHER

LAUNDRY ROOM

- FRIGIDAIRE FRONT LOAD WASHER
- FRIGIDAIRE FRONT LOAD GAS DRYER
- CERAMIC TILE FLOOR

ELEGANT MASTER BATH

- STALL SHOWER WITH GLASS DOOR AND CERAMIC TILE BASE AND WALLS
- CERAMIC TILE FLOOR AND BASE
- SEPARATE SOAKING TUB WITH KOHLER DECK MOUNT DEVONSHIRE FAUCET
- MAPLE DOOR VANITY
- GRANITE TOP
- TWO CAXTON UNDERMOUNT SINKS
- KOHLER DEVONSHIRE WIDESPREAD FAUCETS AND TOILET
- WALL MIRROR

SECOND FLOOR HALL BATH

- CERAMIC TILE FLOOR AND TUB WALL SURROUNDS
- MAPLE DOOR VANITY
- CULTURED MARBLE TOP WITH TWO SINKS
- KOHLER DEVONSHIRE WIDESPREAD FAUCETS AND TOILET
- WALL MIRROR

OFFICE BATH

- CERAMIC TILE FLOOR AND TUB WALL SURROUNDS
- MAPLE DOOR VANITY
- CULTURED MARBLE TOP WITH SINK
- KOHLER DEVONSHIRE WIDESPREAD FAUCET AND TOILET
- WALL MIRROR

POWDER ROOM

- CERAMIC TILE FLOOR AND BASE
- DEVONSHIRE PEDESTAL SINK
- KOHLER DEVONSHIRE WIDESPREAD FAUCET AND TOILET
- WALL MIRROR

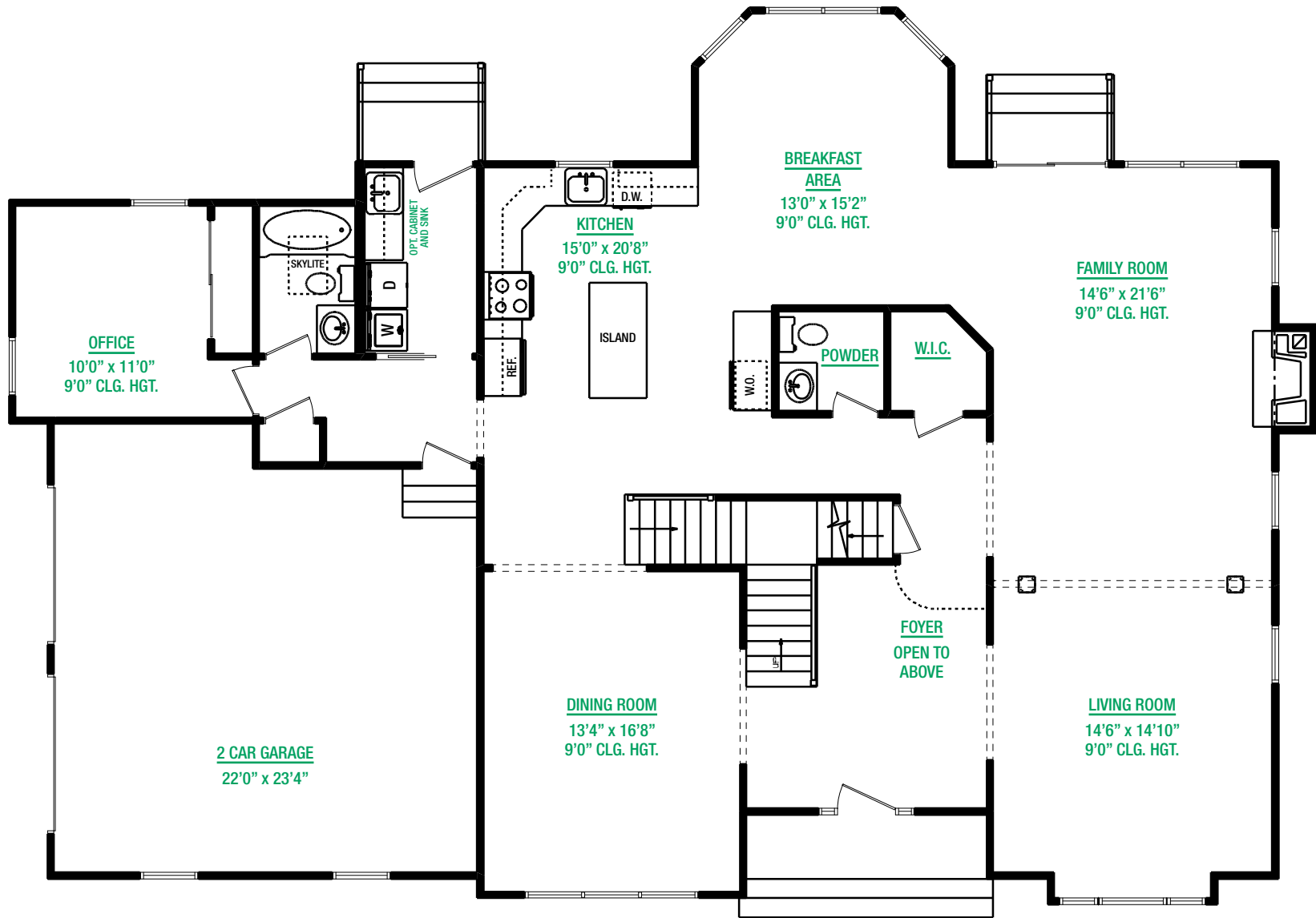
ELECTRICAL FEATURES

- 200 AMP ELECTRIC SERVICE TO CODE
- ALL COPPER WIRING
- 10 HIGH HATS
- DECORATOR WHITE SWITCHES AND RECEPTACLES
- 2 PREWIRED TELEPHONE JACKS
- 5 PREWIRED CABLE JACKS
- 1 TV RECEPTACLE & HDMI CABLE IN MASTER BEDROOM
- 8 INTERCONNECTED SMOKE DETECTORS
- 3 CARBON MONOXIDE DETECTORS
- DOOR CHIME SYSTEM

EXTERIOR FEATURES

- CULTURED STONE WITH VINYL SHAKE FACADE
- MAINTENANCE FREE VINYL SIDING AND SOFFITS
- 30 YEAR ARCHITECTURAL ROOF SHINGLES
- SEAMLESS LEADERS AND GUTTERS
- VINYL DOUBLE GLAZED DOUBLE HUNG WINDOWS WITH SCREENS
- OUTDOOR LANTERN POST LIGHT
- ASPHALT DRIVEWAY WITH PAVER DRIVEWAY LINER AND WALKWAY TO FRONT ENTRANCE
- ALL UNDERGROUND UTILITIES
- PUBLIC WATER
- TWO HOSE BIB CONNECTIONS
- TWO WEATHERPROOF RECEPTACLES
- SOD FRONT AND SIDE YARDS AND REAR YARD SEEDED
- LAWN SPRINKLER SYSTEM
- EXTERIOR LIGHTS AT EACH OUTSIDE ENTRANCE

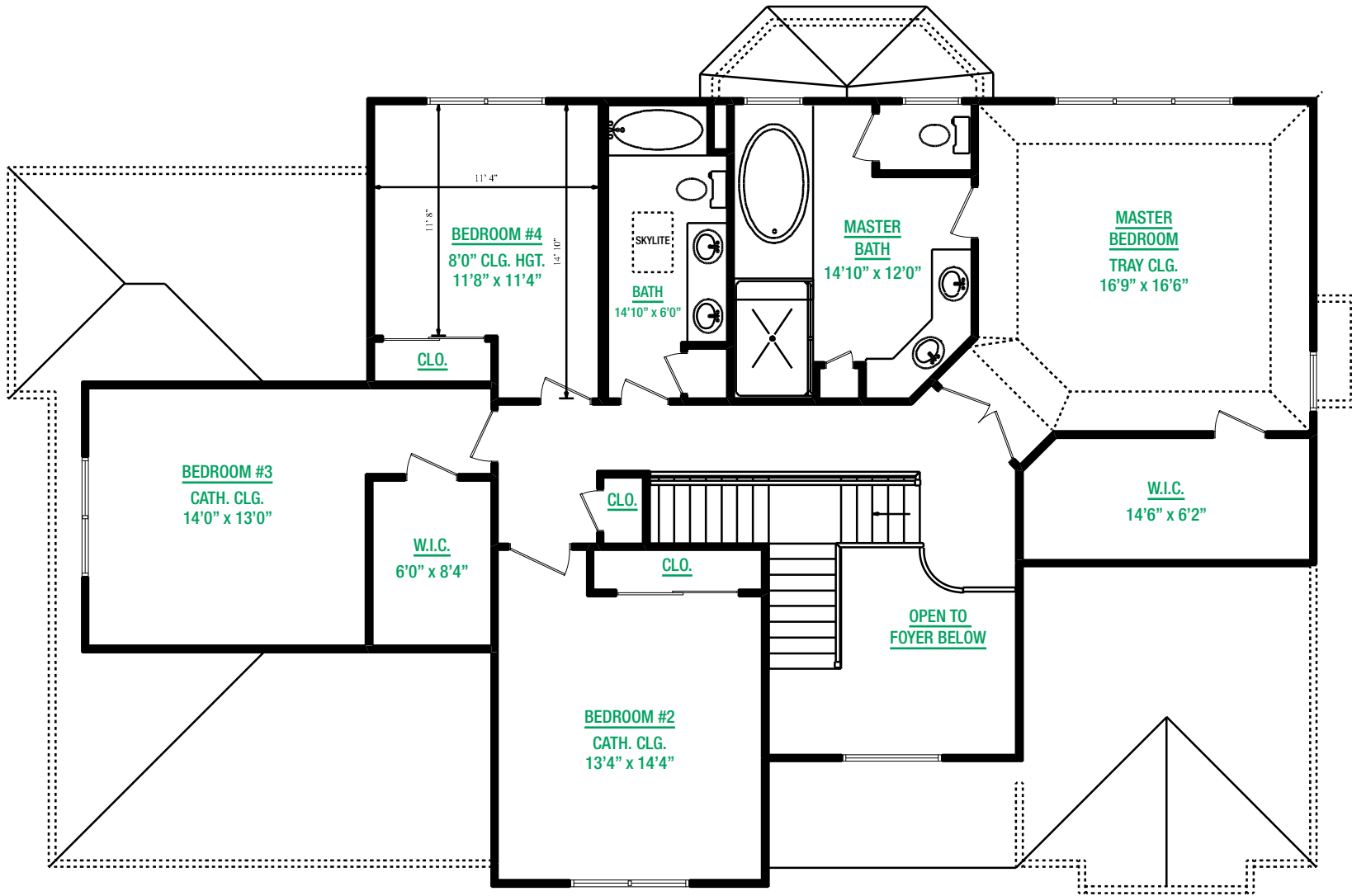
- **A SOLAR AND GENERATOR READY HOME**



FIRST FLOOR PLAN
LIVING AREA = 1963 SQ.FT.
GARAGE AREA = 534 SQ.FT.

The Windsor

THE RENDERINGS/FLOOR PLANS MAY NOT REFLECT THE EXACT FEATURES OF YOUR HOME. ALL DIMENSIONS ARE SUBJECT TO FIELD VARIATIONS



SECOND FLOOR PLAN
LIVING AREA = 1540 SQ.FT.

The Windsor

THE RENDERINGS/FLOOR PLANS MAY NOT REFLECT THE EXACT FEATURES OF YOUR HOME. ALL DIMENSIONS ARE SUBJECT TO FIELD VARIATIONS